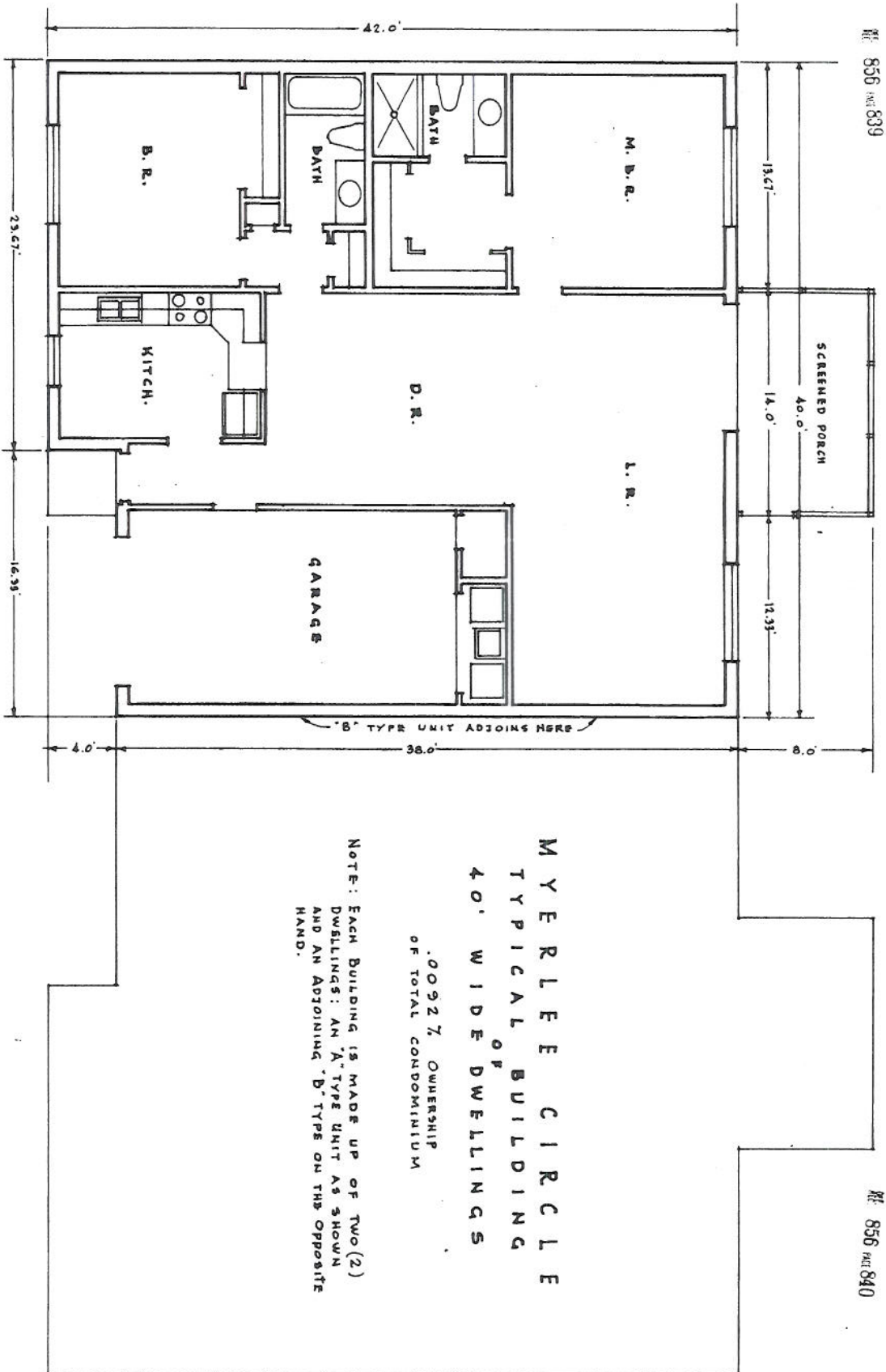


REF: 856 INT 839

REF: 856 INT 840

COND. BK 2 P. 247

48



"A" TYPE FLOOR PLAN
"B" TYPE : OPPOSITE HAND.



MYERLEE CIRCLE
TYPICAL BUILDING
OF
40' WIDE DWELLINGS

.0092% OWNERSHIP
OF TOTAL CONDOMINIUM

NOTE: EACH BUILDING IS MADE UP OF TWO (2)
DWELLINGS: AN "A" TYPE UNIT AS SHOWN
AND AN ADJOINING "B" TYPE ON THE OPPOSITE
HAND.

Myerlee 'the planned community' by
L. & M. DEVELOPMENT CORP., Fort Myers, Florida

Frank Memoli, A.I.A.
ARCHITECT and PLANNER
EXHIBIT B

1961
2
0351413

Pl. 856 sub 841

SCREENED PORCH
90.0'

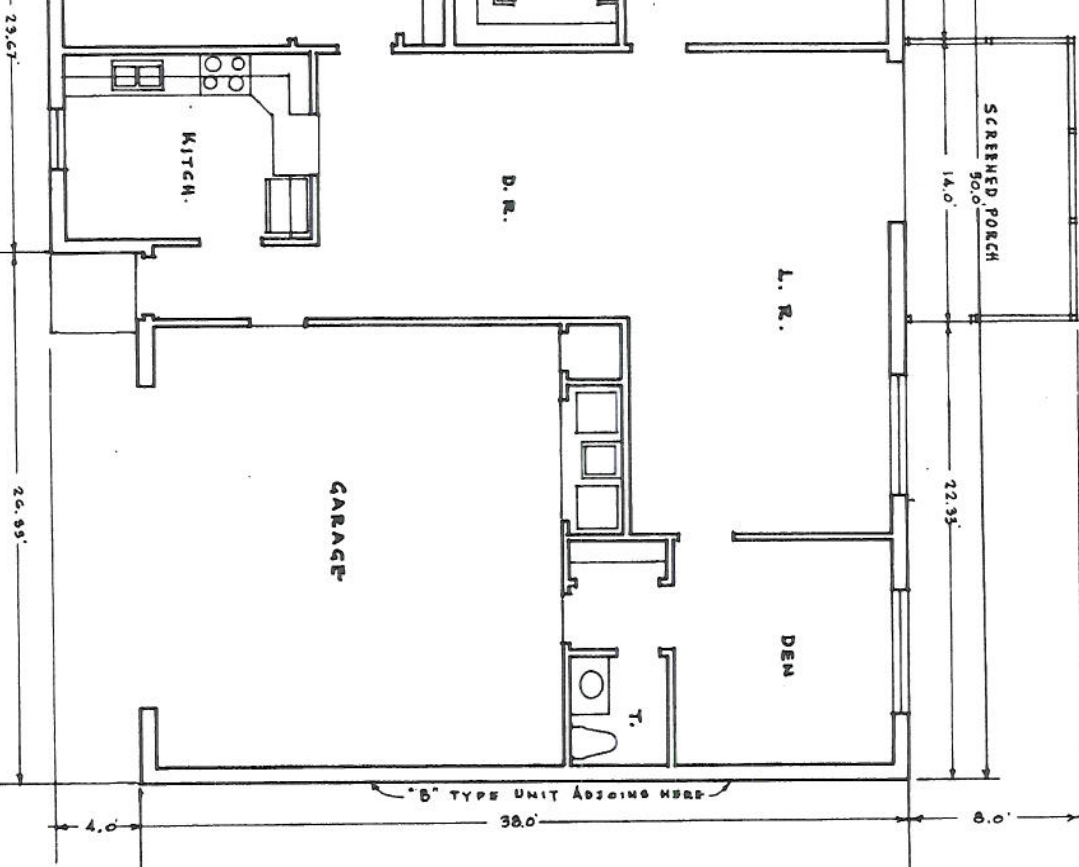
13.67'

14.0'

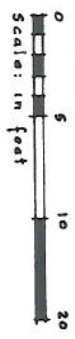
22.93'

8.0'

42.0'



"A" TYPE FLOOR PLAN
"B" TYPE: OPPOSITE HAND.



Myerlee 'the planned community' by
L. & M. DEVELOPMENT CORP., Fort Myers, Florida

Cond. Bk. 2 Pg. 248

Pl. 856 sub 842

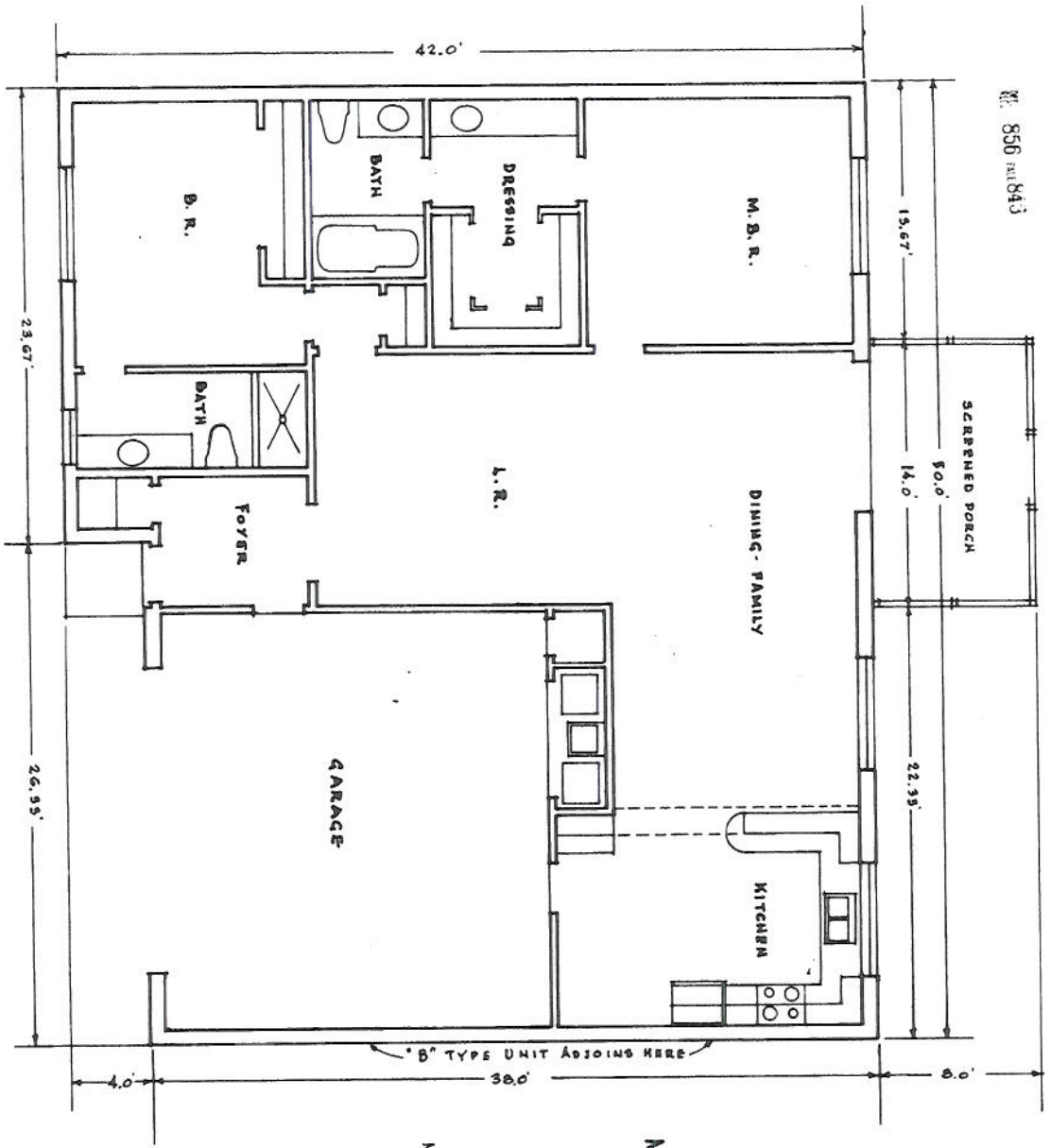
48

MYERLEE CIRCLE TYPICAL BUILDING 50' WIDE DWELLINGS (BASIC PLAN)

.0137, OWNERSHIP
OF TOTAL CONDOMINIUM
NOTE: EACH BUILDING IS MADE UP OF TWO (2)
DWELLINGS: AN "A" TYPE UNIT AS SHOWN
AND AN ADJOINING "B" TYPE ON THE OPPOSITE
HAND.

Frank Memolly, A.I.A.
ARCHITECT and PLANNER
EXHIBIT B
SHEET NO. 3
OF 5 SHEETS

NO. 856 FILE 843



"A" TYPE FLOOR PLAN
"B" TYPE : OPPOSITE HAND.



Myerlee 'the planned community' by
L. & M. DEVELOPMENT CORP., Fort Myers, Florida

Cond. Sk. 2 Pg. 249

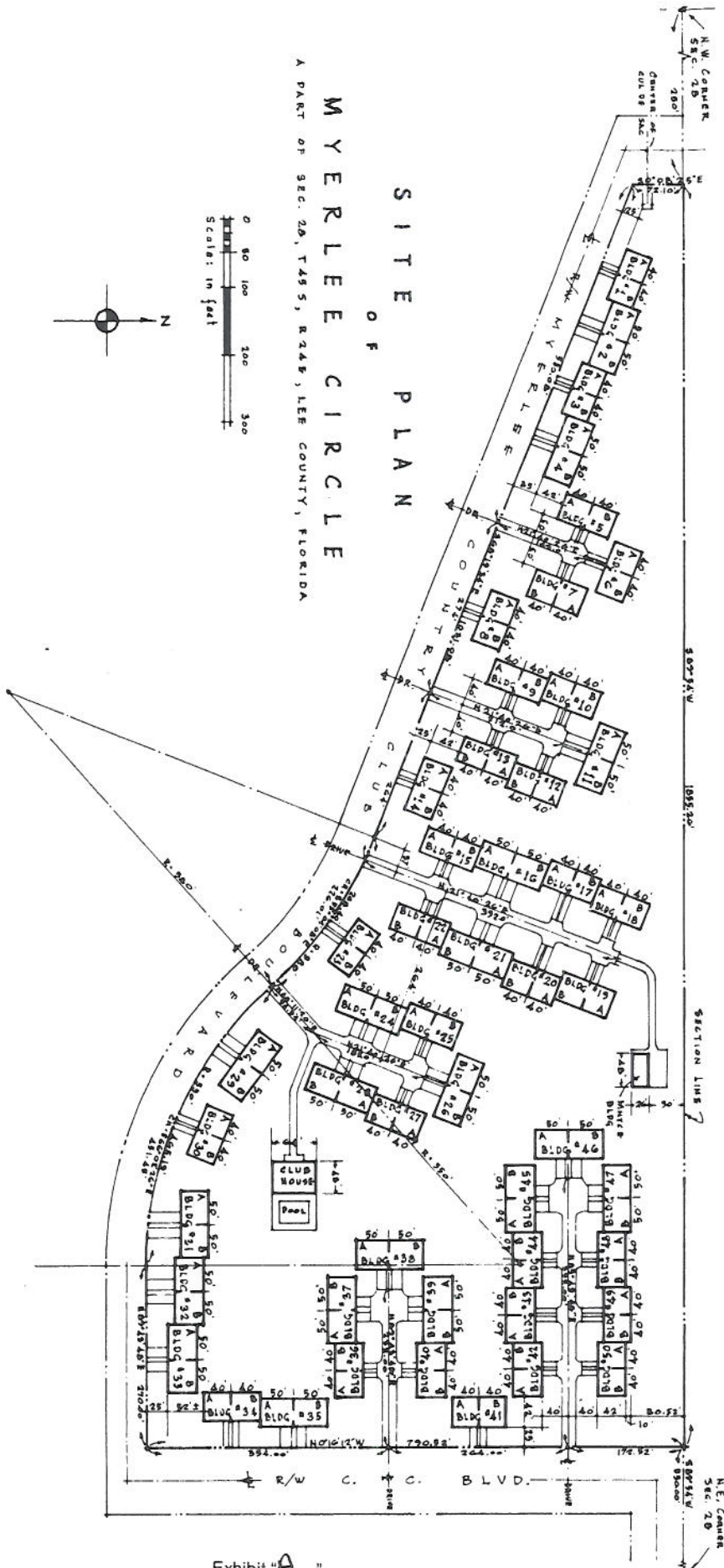
NO. 856 FILE 844

MYERLEE CIRCLE
TYPICAL BUILDING
OF
50' WIDE DWELLINGS
(ALTERNATE PLAN)

NOTE: EACH BUILDING IS MADE UP OF TWO (2)
DWELLINGS: AN "A" TYPE UNIT AS SHOWN
AND AN ADJOINING "B" TYPE ON THE OPPOSITE
HAND.
.0113 7% OWNERSHIP
OF TOTAL CONDOMINIUM

Frank Memoli, A.I.A.
ARCHITECT and PLANNER
EXHIBIT B
1 UNIT NO. 4
OF 5 UNITS

48

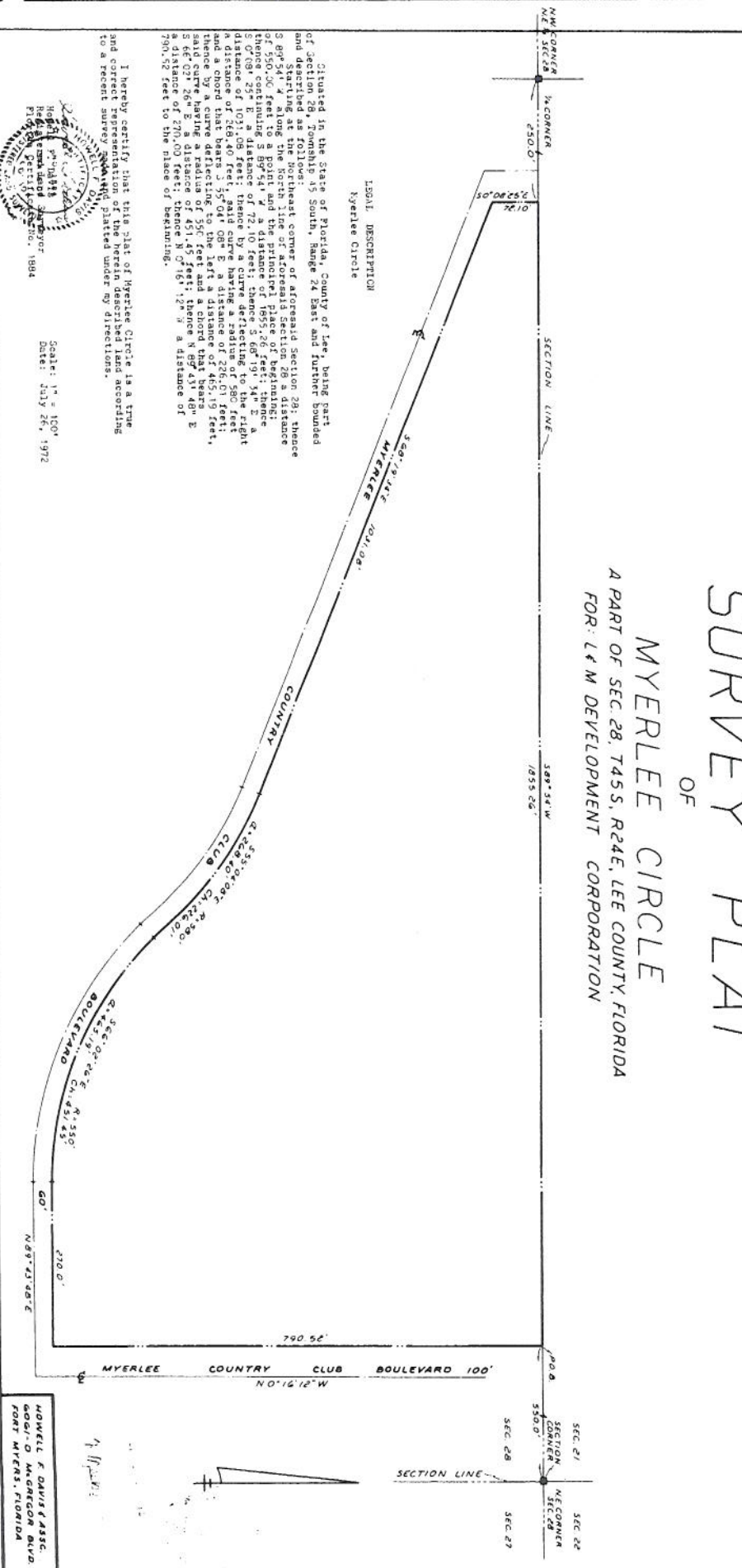


SITE PLAN
OF
M Y E R L E E C I R C L E
A PART OF SEC. 20, T.45 S., R.24 E., LEE COUNTY, FLORIDA

Myerlee 'the planned community' by
L. & M. DEVELOPMENT CORP., Fort Myers, Florida

Frank Memoli, A.I.A.
ARCHITECT and PLANNER
FORT MYERS, FLORIDA
EXHIBIT B
SHEET NO. 5
OF 5 SHEETS

SURVEY PLAT
 OF
MYERLEE CIRCLE
 A PART OF SEC. 28, T45S, R24E, LEE COUNTY, FLORIDA
 FOR: L & M DEVELOPMENT CORPORATION



LEGAL DESCRIPTION
 Myerlee Circle

Cloned in the State of Florida, County of Lee, being part of Section 28, Township 45 South, Range 24 East and further bounded and defined as follows: Starting at the Northeast corner of aforesaid Section 28; thence S 89° 54' 4" along the North line of aforesaid Section 28 a distance of 550.00 feet to a point and the intersection of Section 28 and Section 29; thence S 89° 54' 4" a distance of 155.26 feet; thence S 89° 54' 4" a distance of 72.10 feet; thence S 69° 19' 34" E a distance of 1031.08 feet; thence by a curve deflecting to the right a distance of 268.40 feet; said curve having a radius of 226.00 feet and a chord that deflecting to the left a distance of 465.19 feet; said curve having a radius of 356 feet and a chord that bears S 46° 07' 26" E a distance of 451.45 feet; thence N 89° 43' 48" E a distance of 270.00 feet; thence N 0° 16' 12" W a distance of 790.52 feet to the place of beginning.

I hereby certify that this plat of Myerlee Circle is a true and correct survey and is filed under the herein described land according to a recent survey and is filed under my directions.



Howell F. Davis & Assoc.
 6001 D. M. GREGG BLVD.
 FORT MYERS, FLORIDA

Scale: 1" = 100'
 Date: July 26, 1972